


- Be sure to read this User's Manual before starting the operation of the receiver.
- Never open the cover. It is dangerous to touch the inside of the receiver due to possible electric hazard.
- When the receiver is unused for a long time, unplug the power cord from the wall outlet.
- Do not use a damaged power cord that may cause a fire or an electric shock.
- Do not touch a power cord with wet hand. It may cause an electric shock.
- Place the receiver in well ventilated and no-heat environment.
- When connecting cables, the receiver must have been powered off.
- Do not stack the exposed firing device, such as candle, on top of the receiver.
- Do not expose the receiver to dripping or splashing and that no objects filled with liquids, such as base, shall be placed on the apparatus.

### How to Use This Manual

This manual provides complete instructions for installing and using this receiver.

The following symbols will serve as follow.

 **Warning** Indicates a warning information.

 **Tips** Indicates any other additional important or helpful information.

**MENU** Represents a button on the remote controller or the receiver.  
(*Bold Character*)

*Move to* Represents a menu item within a window.  
(*Italic Character*)

**Contents**

**Next**

**1. Before You Begin**

- 1.1 Features
- 1.2 Accessories

**2. Controls and Functions**

- 2.1 Front Panel
- 2.2 Remote Control Unit
- 2.3 Rear Panel

**3. Connections**

- 3.1 Connecting to TV & VCR
- 3.2 Connecting to Dish
- 3.3 Connecting to SMART CARD Module

**4. Setting and Operations**

- 4.1 Before Settings
- 4.2 Basic Settings
- 4.3 Viewing TV(OR Radio)
- 4.4 EPG
- 4.5 Channels Manager
- 4.6 Add Favorites
- 4.7 Favorites Manager
- 4.8 Other Settings
- 4.9 Name Edit

**Additional Information**

- A.1 Trouble Shooting
- A.2 Specifications
- A.3 Glossary of Terms.

## 1.1 Features

### <Common Parts>

- Easy Graphic MENU Interface
- RS232C Port for Updating Control Software and Additional Service
- Supports DISEQC1.0/1.2, 0/12V, 13/18V, 0/22Khz Tone
- 2-SCART Connectors & 1-RCA Connector
- Multi-Language Function(Menu,Audio)
- Last Channel Memory
- OSD : Transparency & Blending, 256Palette Colors
- Front Panel Buttons & IR Remote Controller User Interface
- Editing Functions(TV or Radio Channel, Channel Name, Favorite Name Satellite Name)
- EPG for On Screen Channel Information
- Channels Memory for Multi-satellite(up to 64)
- 3 Operation Modes(Digital TV, Digital Radio, Favorite)
- PLL RF Modulator UHF21-69 with PAL-G/I/K(optional)

### <Digital Parts>

- Receives QPSK Satellite Broadcasting RF Signal and Decodes the Digitally Encoded Signal
- Digital Tuner with Loop-through out
- SCPC/MCPC Receivable from C/KU-band Satellite.
- MPEG-2 Main Profile at Main Level
- Teletext Supported Through VBI & OSD
- 4800 Channels Memory

### <Irddeto Embedded>

- 1 Slot Smart Card

## 1.2 Accessories

- User's Manual
- Remote Control Unit
- Batteries

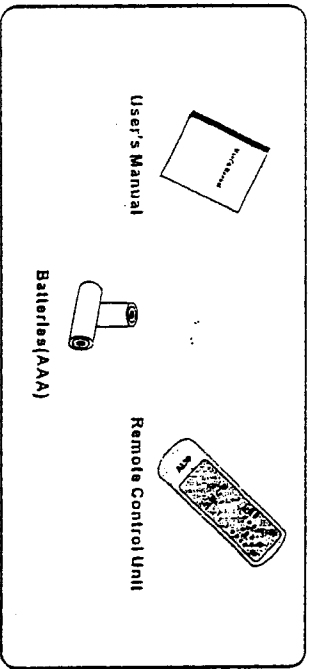


Figure 1. Accessories

**Warning** Please don't recharge, disassemble, electric short, and mix with used or other battery types

## A.3 Glossary of Terms

**C band**  
3.7 ~ 4.2GHz Frequency.

**DISEQC**  
Digital Satellite Equipment Control.

**Ku band**  
11 ~ 18GHz Frequency.

**LNB(Low-Noise Block converter)**  
The LNB is an electronic unit mounted on the satellite dish. It receives the signals reflected by the dish and converts them to signals that can be used by Satellite receiver.

**PID**  
Package Identifier.

**PIN Code**  
Personal Identification Number. A four-digit code that is used for locking/unlocking. e.g. with the parental control feature.

**Polarization**  
Polarization allows several programmes to be fitted into the same frequency band. The signals from a satellite are transmitted either with linear (vertical or horizontal) polarization or circular(right or left) polarization.

**RS232**  
Serial data port.

## 8. Physical Specification

Size(WxHxD)	280 × 65 × 235mm Excluding the foot. Foot height is 6mm
Weight	2.0kg

## 9. Environmental Condition

Operating Temperature	0°C - 40°C
Storage Temperature	-10°C - 50°C
Operating Humidity Range	10 - 85% RH, Non-condensing
Storage Humidity Range	5 - 90% RH, Non-condensing

## 2.1 Front Panel

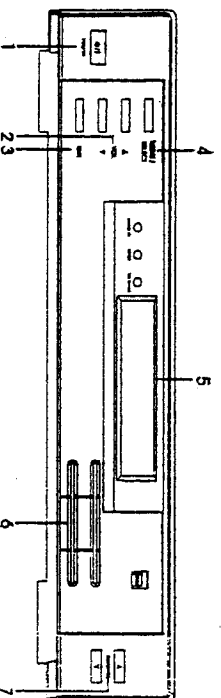
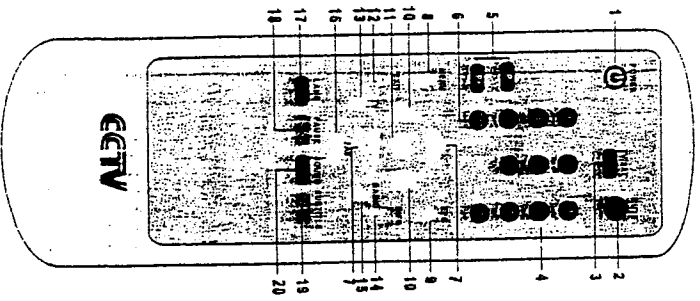


Figure 2. Front Panel

1. **Power Button**  
Turns the receiver On/Off.
2. **Volume UP/DOWN Button**  
Increases/decreases the volume levels in No-menu state. Change the setting values in specific Menu Item.
3. **Exit Button**  
Exits from the current menu or cancels the current progressing operation if applicable.
4. **Menu/Select Button**  
Shows the System set-up menu in No-menu state. Activates the highlighted menu item in Menu state.
5. **Display**  
The yellow led is the stand by indicator and red led is lock indicator. The green led indicates that mail or announcement message have arrived.
6. **SMART CARD Slot (Trade Model Only)**  
Insert smart card into smart card slot for conditional access.
7. **Channel UP/DOWN Button**  
Moves the cursor up/down in Menu state. Changes the current program to the previous/next program in No-menu state.

## 2.2 Remote Control Unit

All features of the set-top box can be controlled with the remote controller.



1. **POWER**  
Turns the receiver On/Off.
2. **MUTE**  
Mutes audio output of the receiver.
3. **TV/SAT**  
Control RF modulator output to receiver output or ANT Input of RF modulator. Whenever TV/SAT button is pressed RF modulator output(TV/VCR) is changed to receiver video/audio output or bypass ANT input signal.
4. **NUMERIC KEY(0-9)**  
Controls the numerical operation and especially changes program directly.
5. **P-/P+**  
Recall previous channel in No-menu state. Page up and down in menu list.
6. **SAT**  
Shows satellites list of the searched channels, change current satellite.
7. **UP/DOWN**  
Change the current program to the previous/next program in NO-menu state.  
Moves the cursor to upward/downward in Menu state.
8. **MENU**  
Shows the menu or sub-menu and cancels the processing function if applicable.
9. **EPG**  
View the program guide in No-menu state.
10. **LEFT/RIGHT**  
Increases/decreases the volume level in No-menu state. Change the setting value in specific Menu item.
11. **OK**  
Activates the highlighted menu item. Display channel list according to TV/Radio Mode

## Specifications

### 5. A/V & Data In/Out

RCA Output	CVBS, L, R Output(Yellow, White, Red Jack) with Volume Control
Data Interface	RS-232, Bit Rate: 115200baud Connector : 9pin D-Sub Male type

### 6. RF-Modulator

RF-Connector	75Ω F-type, IEC 169-24 Female
Frequency	CH3(61.25MHz), CH4(67.25MHz)
Output Channel	CH3, CH4
TV Standard	PAL G/I/K Selectable by Menu Setting
Audio Output	NTSC
Preset Channel	CH4

### 7. Power Supply

Input Voltage	AC 90~240V, 50Hz~60Hz
Power Consumption	Max. 40W
Stand-by Power	<= 6.5W
Protection	Separate Internal Fuse The Input shall have the lightning protection

## 3. System &amp; Memory

Main Processor	ST15518
Flash Memory	2 Mbytes
SDRAM	8 Mbytes
EEPROM	16 Kbytes
Channel Memory	Digital Channel : 4800
Multi-Satellite	Up to 64
Multi-Language Menu	English/Arabic/French/Russian
Front	7Keys, 4-digit 7-segment Display
Remote Controller	35keys, IR Remote Control

4. MPEG Transport Stream & A/V Decoding  
<Digital Part>

Transport Stream Profile Level	MPEG-2 ISO/IEC 13818 Transport Stream Specification MPEG-2 MP@ML
Input Rate	Max 60Mbit/s
Aspect Ratio	4:3, 16:9
Frame Rate	25Hz for PAL, 30Hz for NTSC
Video Resolution	720 x 576(PAL), 720 x 480(NTSC)
Teletext	Through VBI & OSD
Audio Decoding	MPEG/Mus/Cam Layer I & II, MP3, AC3
Audio Mode	Single channel/Dual channel Joint Stereo/Stereo
Frequency Response	20Hz~20kHz, <+/-2dB 60Hz~18kHz <+/-0.5dB
Sampling Rate	32, 44.1, 48kHz

## Remote Control Unit

12. EXIT  
Exits from the menu or sub-menu and cancels the progressing function if applicable.
13. TV  
Shows the current digital TV program list.
14. INFO  
Used for special function. Normally used for viewing channel information.
15. RADIO  
Shows the current digital Radio program list.
16. FAV  
Shows the current favorite program list.
17. LANG  
Shows the list of the audio language available in the current channel.
18. PAUSE  
Pause the video/audio output.
19. SUBTITLE  
Shows the list of subtitle languages the current channel supports.
20. SOUND  
Select sound mode to stereo or mono.

### 2.3 Rear Panel

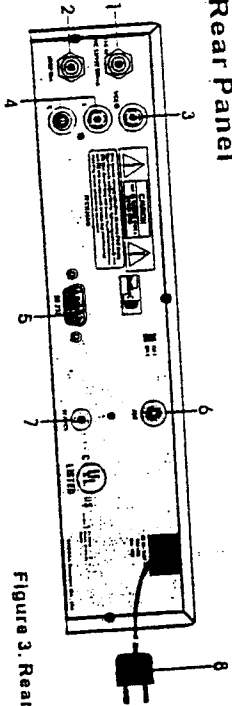


Figure 3. Rear Panel

1. **LNB IN**  
Connect the digital signal from your LNB of your satellite dish to this connector.
2. **LOOP OUT**  
Gives you the possibility to connect an extra receiver (analogue or digital).
3. **VIDEO (Yellow RCA)**  
This connector has a constant video signal for additional VCR-connections.
4. **AUDIO Right (Red RCA) and Left (White RCA)**  
These connectors give you the possibility to connect the audio signal to an external amplifier, or the audio input of your TV.
5. **RS232 Serial Port**  
This serial port can be used to connect your PC to your receiver, and enables you to download new versions of software into your receiver.
6. **ANT**  
RF Modulator (female part). If you have an additional antenna (cable or terrestrial) as well, and you do not use a scart cable to connect the receiver to the TV, then your additional antenna has to be connected here. If you do use a scart cable to connect the receiver to your TV, the additional antenna can be put directly into your TV.
7. **TV/CR**  
RF Modulator (male part). If you do not use a scart cable to connect your receiver to your TV, you will have to use this connector to connect the receiver to your TV, using a coax cable. If you connect your receiver to your TV like this, be sure that you set your TV to the Video channel.
8. **Power Cord**  
Your receiver requires a current of 90-240V AC (Auto-selectable), 50-60Hz +/-5%.  
Make sure to check the power specification before connecting your receiver to the wall outlet.

## Specifications

### A.2 Specifications

#### 1. Ir-deto Embedded (Smart Card Only)

<b>SMART CARD</b>	1 Slot ISO 7816, gsm11_11 and EMV(Payment Systems) Compatibility
-------------------	---

#### 2. Tuner & Channel

<Digital Part>

Type	1X F-type, IEC169-24 Female
Frequency Range	950MHz to 2160MHz
Input Impedance	75 ohm unbalanced
Singal Level	-25 to -66 dBm
LNB Power	13.5/18.5Vdc±5%, 0.5A max. Overload protected
22kHz Tone	Frequency: 22kHz ± 2kHz Amplitude: 0.6V ± 0.2V
DISEQC Control	Version 1.2 Compatible
Demodulation	QPSK
Input Symbol Rate	2-45Ms/s
FEC Decoder	Convolution Code Rate 1/2, 2/3, 3/4, 5/6 and 7/8 With Constant Length K=7



### A.1 Trouble Shooting

There may be various reasons for the abnormal operation of the receiver. Check the receiver according to the procedures shown below. If the receiver does not work properly after checking it, please contact the dealer.  
Don't open the receiver cover. It may cause a dangerous situation.

Symptom	Cause	Remedy
The display on front panel does not light up.	The power cord is not plugged in.	Check that the power cord is plugged in to the wall outlet.
No picture or sound	Wrong connection of the Audio/Video output of the receiver to TV. Audio mulling. TV power off.	Connect the Audio/Video output of the receiver to TV correctly. Press the MUTE button. Turn TV on.
No picture	The receiver can't receive the signal. Incorrect values of some tuner parameters. Wrong direction of the dish	Check the antenna cable, replace the cable, or connect the cable to the receiver tightly. Set the values of tuner parameters correctly in Installation menu. Check the signal strength with a spectrum analyzer and adjust your dish correctly.
The remote controller does not working	The batteries of the remote controller are not inserted or exhausted	Check whether the batteries are inserted correctly in your remote controller. Check the batteries, and if exhausted replace the batteries of the remote controller.

### 3.1 Connecting to TV & VCR

#### <Basic connection with a coax cable>

1. Connect the satellite signal from the LNB to the LNB IN connector.
2. Connect the TV/VCR connector at the back of the receiver to the coax IN connector on your TV set.
3. Optional : connect an extra terrestrial or cable antenna to the ANT connector at the back of the receiver.

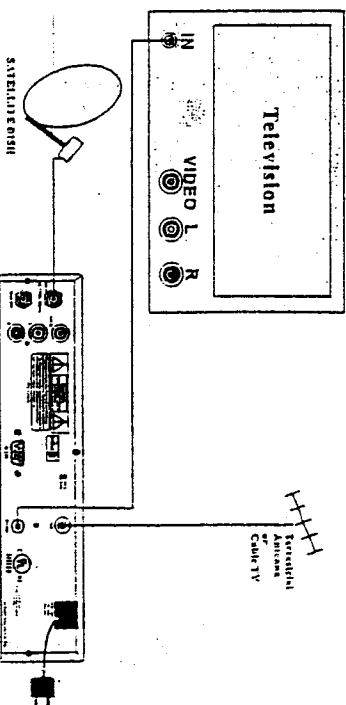


Figure 4 Basic connection with a coax cable

#### <Connecting to TV>

1. Connect the satellite signal from the LNB to the LNB IN connector.
2. Connect the RCA connector at the back of the receiver to the RCA-In connector on your TV set.

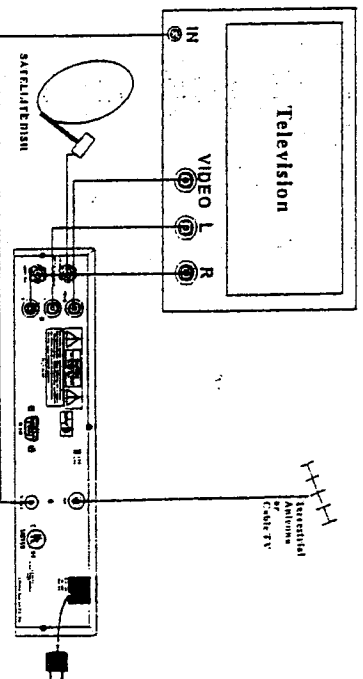


Figure 5 Connecting to TV

### 3.2 Connecting to Dish

Aiming a satellite dish and LNB to the correct longitude and Azimuth (angle of elevation) of a satellite is a specialist job, and can best be done by an official Integra dealer.

#### <Connecting a fixed satellite dish to your receiver>

Make your choice of which satellite you want to receive your signals from, and have your Integra dealer aim your dish at the requested satellite. Connect a coax cable to your LNB and the other end directly to the LNB IN connector of your receiver.

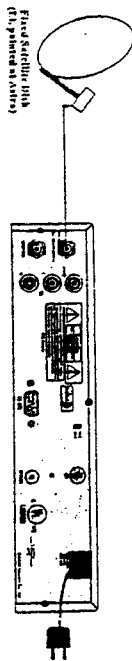
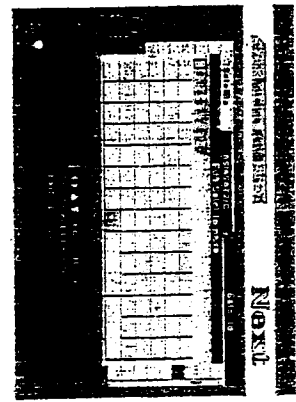


Figure 6. Connecting a fixed satellite dish to your receiver

### 4.9 Name Edit

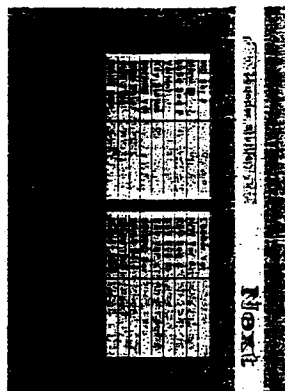
The name editing is the same for each menu. You can change the following names: Channel name, Favorite Group name and Satellite name.



Use the Left/Right/Up/Down button to move keypad cursor to the character you wish to input. After you select a character on keypad press OK, then the character in the name box is replaced (or inputted) with the character. To move character input position of the name box, select or character on the keypad. If you completed editing move keypad cursor 'Save' key and press OK button.

**- Loader Status**

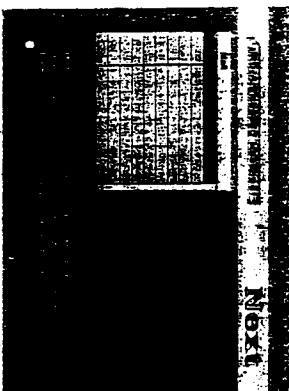
Loader status displays information about the IRD, and software loaded into it.



<screen 34>

**- IRD Message**

The user can read the message sent to the individual decoders. We can save the maximum 5 small messages, and 5 announcement messages.



<screen 35>

**<Connecting multiple fixed dishes to your receiver using a DISEqc 1.0 switch>**

If you want to watch programs from more than satellites (For instance from Astra and from Hot Bird) It is advisable to use fixed dishes and a DISEqc 1.0 switch. Have your Integra Dealer align the dishes at the requested satellites and connect the LNBs with coax cables to the IN connectors of the DISEqc 1.0 switch. Connect the OUT connector of the DISEqc 1.0 switch to the LNB IN connector at the back of your receiver.

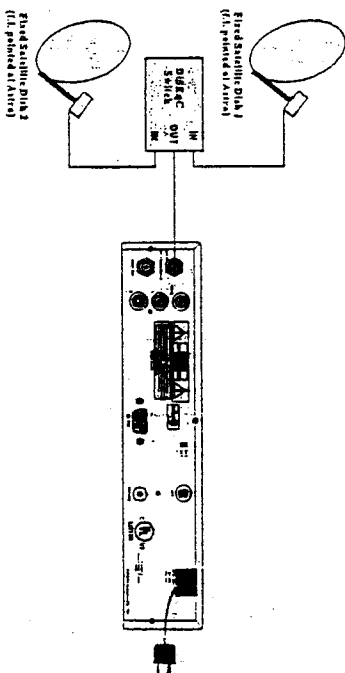


Figure 7. Connecting multiple fixed dishes to your receiver using a DISEqc 1.0 switch

<Connecting a dish on a motorized positioner to your receiver>

An other possibility to watch programs from multiple satellites is by mounting a dish to a motorized DiSeqC 1.2 positioner. Have your Integra dealer mount the dish to the positioner, set the correct azimuth (angle of elevation) and let him set the centerpoint for your positioner. Connect the LNB with a coax cable to the LNB IN connector of the positioner, and connect the QUT connector of the positioner to the LNB IN connector at the back of your receiver.

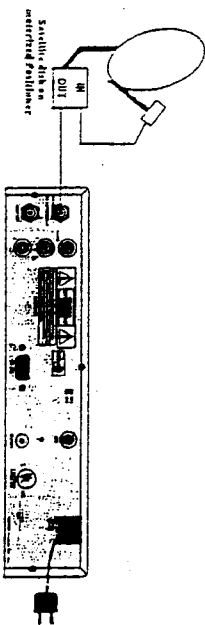
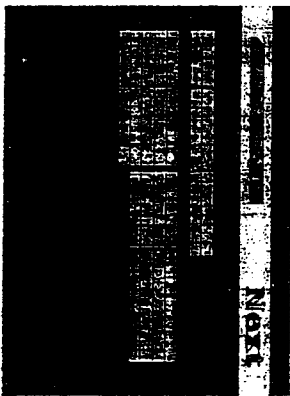


Figure 8. Connecting a dish on a motorized positioner to your receiver

<IRDeto>

-IRD Status

The IRD status displays technical information about the IRD, CA, Smart Card and software loaded into it.



<screen 32>

-CA Status

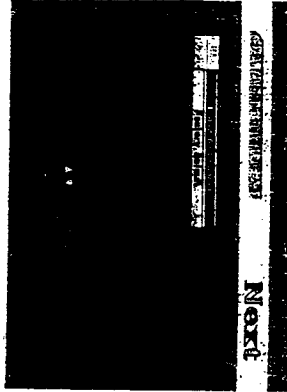
CA status displays Smart Card EMM/ECM information.



<screen 33>

<Clear Data>

- Erase All Channel : Deletes only the saved channel data, other setting values are not deleted.
- Factory Default : Deletes all the data currently saved and set and returns the system to the initial status.



3.3 Connecting to SMART CARD (Irdeto Model Only)

Insert Smart Card into Smart Card slot for watching TV programmes from Service Provider.

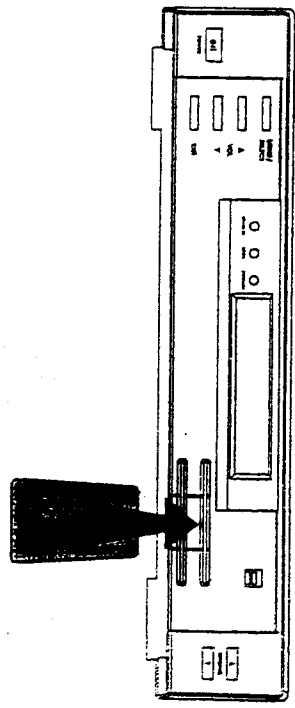
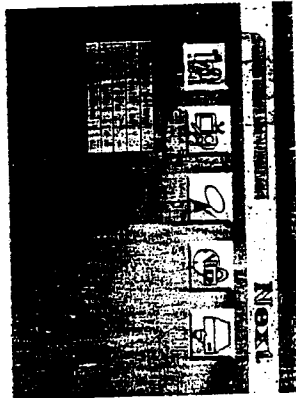


Figure 9. Connecting to SMART CARD

#### 4.1 Before Settings

##### <Starting up for the First Time>

1. Turn on your TV and receiver.
2. If it's first time using a receiver, you should set parameters for system configuration. After displaying the login screen, press the **MENU** button. The <Screen 1> will be appeared.



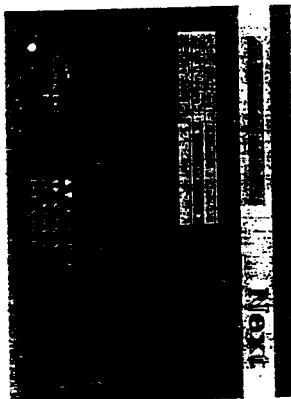
<screen 1>

##### <Menu Information>

The menu consists of main-menu and sub-menu, as you see in the <Screen 1>. Main-menu has 5 items and each main-item has its sub-menu items.

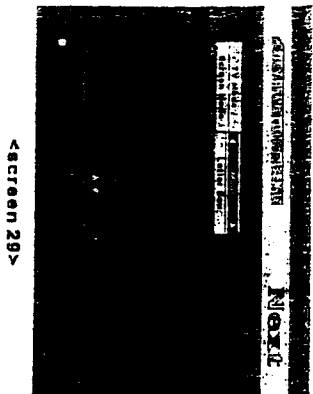
##### <Time Setting>

If a broadcaster provides GMT, you can set the time using GMT, or set your own time by yourself. If the GMT usage is on, Current time is automatically set and you can only set the time zone. If you set GMT Usage to OFF, "Set Data" and "Set Time" item are displayed. To set date value press **OK** button on the item then calendar window is displayed. You can select date from calendar. To set time value move cursor to time item and use numeric button on the remote controller.



<screen 30>

<TV Setting>



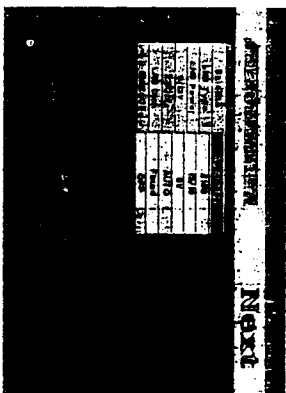
- **TV Mode**  
You can select OSD & video display mode to one of Multi, PAL, NTSC. When PAL mode is selected, for example All screen is displayed as the PAL mode in spite of the current Programs transmission mode.
- **Video output**  
You can change the SCART output signal into Composite(CVBS) or RGB color composition.
- **Screen Mode**  
When program transmission is in 16:9 and you have a TV set with the 4:3 picture format you can select Fullscreen or LetterBox picture format.
- **S/P/DIF Output**  
Enable or Disable S/P/DIF optical audio output. You must connect device that decode optical audio output signal.
- **UIF Mode**  
If TVs connected by RF cable, you can select the RF modulator type. RF modulator type affects a programs audio.
- **UIF Channel**  
When TVs connected by RF cable, you must select RF channel number to the same value on the TV. If other number is selected the picture will not be viewed.

4.2 Basic Settings

<Antenna Setup>

With this menu, you can designate the satellite to search channels. There are up to 64 satellites available. In this menu, you can edit the satellite name.

1. If you press OK in Antenna Setup of Installation Menu, the <screen 3> will be appeared.
2. Use the Up/Down button to select the item, and set up the parameter with the Left/Right button.
3. If you completed setting, use Red button to Save, Green button to Save/Exit.



- Satellite** : If you press OK in satellite, the satellites list is displayed. Move the cursor to a satellite and press OK to select the satellite and have the list disappeared, or press EXIT on the remote controller to cancel the setting and have the list disappeared.
  - If you want to rename the satellite, press the INFO button on the remote controller at the satellites list. (see 4.9 Name Edit)
  - LNB Type** : You can select one of the LNB type from Universal(9750--10600), 5150, 9750, 10000, 10050, 10600, 10750, 11200, 11475, or user defined type. You should input LNB value directly in user defined(default value is 0).
  - LNB Power** : You can select 13V or 18V for LNB. Select Off if you want to off LNB power.
  - 0/12V** : Setup the 0/12V switch option.
  - 22KHz** : Setup the 22KHz switch.
- If you have connected to a dual LNB or two antennas connected to a 22KHz tone switch box, set it to "ON".

## Next

**LNB Dish :** Use this option to use the Digital Positioner. The default is Fixed. If you want to move the dish, set the LNB Dish field to Moved.

**DISEQC switch :** The default is Off. To use the DISEQC switch, set up DISEQC.

- Tips** If you had set LNB Type to Universal, LNB Power and 22KHz switch options are disregarded. If you set LNB Dish to Moved, DISEQC switch is disappeared and positioner item is appeared. On the other hand, if you set LNB Dish to Fixed, positioner item is disappeared and DISEQC switch is appeared.  
Universal LNB : 9750 ~ 10600MHz

### <Positioner Setup>

If you use DISEQC digital positioner you can set dish position from Antenna Setup menu. First, change "LNB Dish" value to Moved then DISEQC menu item is changed to Positioner item. If you already set dish position for current satellite item value is displayed as "Setup(SET)". To set dish position press OK button. Positioner menu will be displayed.



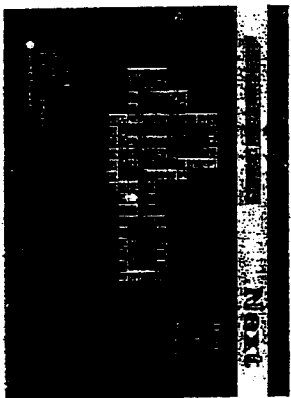
<screen 3>

**Satellite :** Show the satellite name dish position is set. If you want to change satellite you should change satellite from Antenna Menu.

**TP Freq :** Show TP of the designated satellite. Signal level and quality is checked on the base of current TP value. If you want to change to other TP use Left/Right button or OK button, then TP list will be displayed.

### <Sokoban>

You are the sokoban and you have to push the balls to their correct positions (SKYBLUE square). The balls can only be pushed, never pulled, so you have to be careful not to push them into a corner where you can't get them out again. You can only push one ball at the time.



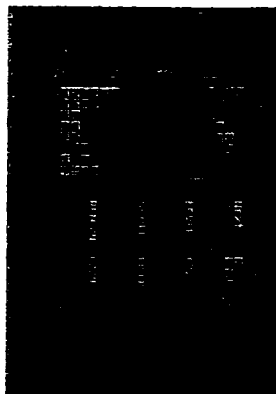
<screen 28>

You can move around by using the arrow keys.  
You can restart level by using color key(REDD).  
You can use undo function by using color key(GREEN) for moving cancel.  
(Only one step).  
You can go to previous or next level(between completed level) by using color key(YELLOW, BLUE)



<Tetris>

If you want to play game, Select the Preference Item and use the tetris button.

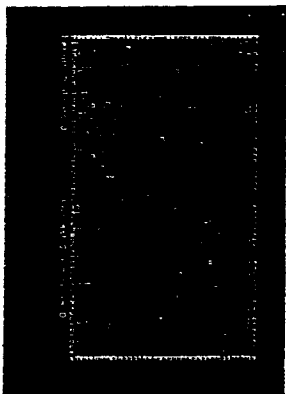


<screen 26>

- Left/Right button : Move block to a left or right direction
- Down button : Drop block
- OK : Rotate block

If you want to stop the game, use the EXIT button.

<Snakes>



<screen 27>

- Left/Right button : Move snake icon to left or right direction.
  - Up/Down button : Move snake icon to up or down direction.
- If Blue snake icon is passed through the Yellow icon length is increased, but passed through the Green icon length is decreased.  
If passed through Gray icon current game mode is ended.

**Go to REF :** You can use this item to move dish position to center. If you press OK button dish position is moved to center position. While position is moving to center, wait message is displayed.

**Move :** Use to move dish position to east or west direction. Whenever Left button is pressed dish position is moved to east direction. And moved to west direction when Right button is pressed.

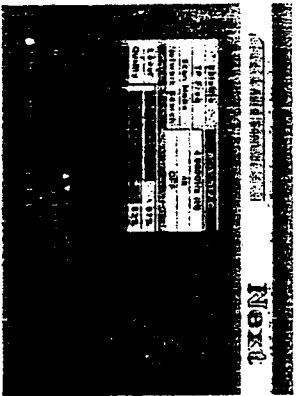
**Set Limit :** Set dish position's east or west limit, disable limit value. Change item with Left/Right button and press OK button to set/disable limit value.

If dish position is moved to correct position to receive satellite signal, signal level and quality color are changed (for example to Green). To save current dish position use Red(Save) or Green(Save & Exit) button.

<Auto Scan>

If you already set the Antenna set up you can scan the satellite. In this menu, you can edit the satellite name and select TP Freq, Scan Mode, Network search.

1. If you press OK In Auto Scan of Installation Menu, the <screen 5> will be appeared.
2. Use the Up/Down button to select the item, and set up the parameter with the Left/Right button.
3. If you completed setting, use Red button to Scan, use Green button to Multi sat scan, Blue button to go to Antenna Set-up menu.



<screen 4>

**Satellite :** You can select other satellite to scan channels using Left/Right or satellite list.(If you press OK button, then satellite list will be displayed).

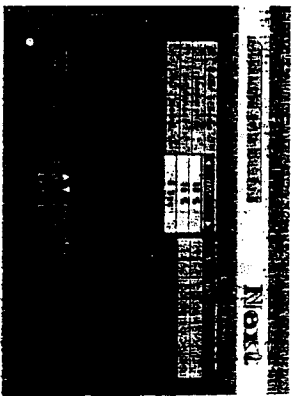
**TP Freq :** Shows a TP value of the current satellite. If you want to see another TP value press OK for TP list or press Left/Right to change TP.

**Scan Mode :** You can designate scanned channel type as FTA channel only or All channels(FTA + Scrambled channel).

**Network Search :** Set this field to ON to perform Network TP Search.

If you press Red(Scan) button all transponders of current satellite are scanned.

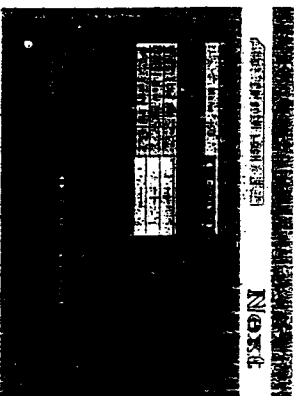
<OSD Setting>



<screen 24>

<Parental Lock>

Changes the Personal Identification Number(PIN) which is used to control the access to the receiver and individual channel.



<screen 25>

- Menu Lock/Unlock

If menu is set to Unlock, the receiver doesn't ask to input your PIN in the menu operation. Use the Left/Right button to change menu lock status. If the lock key message is inconvenient, set the key to Unlock.

- Change PIN

To change the current PIN, first you can input the current PIN and then input new PIN you want to use and then confirm this new PIN. After changing, you must save the PIN configuration using the Save button.

#### 4.8 Other Settings

The Preference menu has following 5 sub-menu.

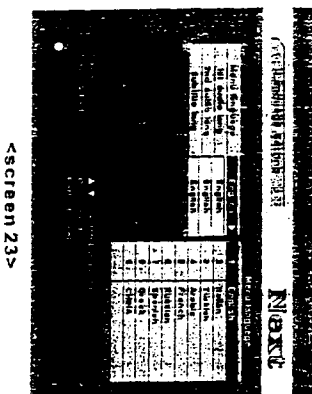
- Language Setting
- Parental Lock
- Tells
- Snake
- Sokoban

And The Config menu has following 4 sub-menu.

- TV Setting
- Time Setting
- Clear Data
- OTA Download

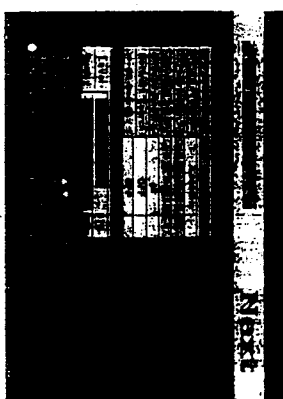
#### <Language Settings>

You can select OSD menu language, Audio language and subtitle language. Use the Right or OK button to view language list.



#### <Manual Scan>

1. If you press OK in Manual Scan of Installation Menu, the <screen 5> will be appeared.
2. Use the Up/Down button to select the item, and set up the parameter with the Left/Right button.
3. If you completed setting use Red(TP Scan) button to scan current transponder channel, Green button to enter PID scan mode, Yellow button to edit TP Information, Blue button to go to Antenna Setup menu.



TP Scan : Searches channels from a specific transponder.

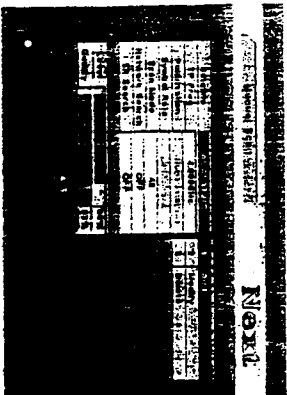
PID Scan : You can search a specific channel by entering the PID value of a channel.

If you press Green(PID) button, the PID screen is displayed as below.  
Enter the PID value and press the PID button again. (To cancel the PID value, press Exit on the remote controller, or press the Green(PID) button to search the channel. You should enter V-PID, A-PID, and P-PID).



<screen 6>

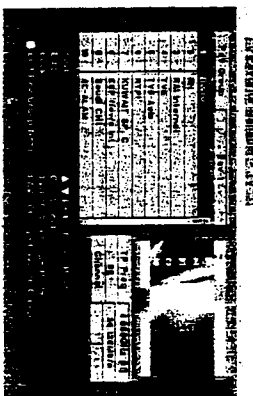
TP Edit : If you press Yellow button You can edit the TP value. Press OK in the Add Item to add the new TP value. In the Modify item to change the current value. In the Delete item to delete the current TP value.



<screen 7>

#### 4.7 Favorite Manager

The function is basically the same as the channel manager menu in 4.5.



<screen 22>

- Sort : Same as the Sort function of channel manager menu in 4.5.
- Edit : Same as the Edit function of channel manager menu in 4.5.
- Lock : Same as the Lock function of channel manager menu in 4.5.
- Fav Group Name : You can edit the name of the favorite group. (see 4.9Name Edit)

#### 4.6 Add Favorites

You can designate the channels of the current TV/Radio list as the favorite channels.



<screen 21>

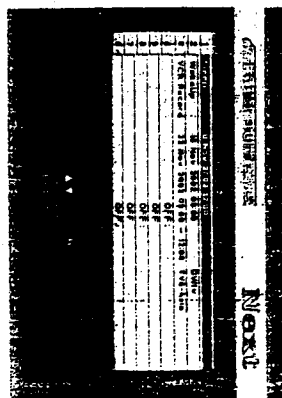
The default favorite list names are "Movie", "News", "Sports", "Music". Move to the required channel with Up/Down or P+/P- button, and then press color button on the remote controller to set channel as favorites.

For example, if you press Red(Movie) button the channel is designated as "Movie" favorite channel. If Red button is pressed again the selected channel is un-selected from "Movie" favorite list. One channel can be selected into more than one favorite list. You can change default favorite list name from Favorite Manager menu. To select Radio channel in the TV list use Radio button, and use TV button in the Radio channel list. You can see the favorite list if you press the 'Fav' button while you are watching TV(or listening Radio channel) in Normal State.

#### <Timer Setting>

You can set the time to make the receiver perform the designated actions including timer based recording(VCR), wake up/sleep the set-top-box.

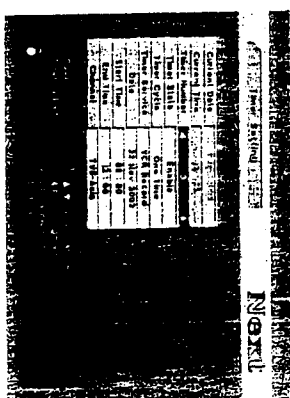
1. If you press OK in Timer Setting of Installation Menu, the <screen 8> will be appeared.



<screen 8>

You can see the current setting state of all timers.

2. Use the Up/Down button to select the timer, and press OK button to setup selected timer information. Following screen will be displayed.



<screen 9>

Use the Up/Down button to select the item, and change the parameters using Left/Right button. If you completed timer settings, use Red(Save) or Green(Save&Exit) button to save timer setting.

**Timer Number :** You can select up to 8 timers.

**Timer State :** You can make this state Enabled to use the timer function.

**Timer Cycle :** You can set the cycle of the action designated in the timer mode.

**Timer Service :** You can set the service(Sleep, Wakeup, VCR Record) of the action designated in the timer mode.

**Date :** You can set the starting date of the timer action. If you press OK, calendar is displayed.

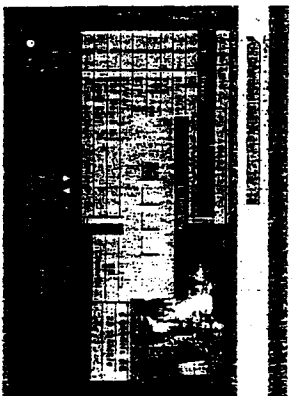
**Start Time(sleep time/wakeup time) :** You can set the starting time of the timer action.

**Ending Time :** You can set the ending time of the recording when the Timer mode is VCR Record.

**Channel :** You can select the program channel viewed when receiver is powered on by the wakeup timer function.

**LOCK**

If channel lock status is enabled, you must enter PIN code to view channel.



<screen 20>

**SKIP**

If channel skip status is enabled, channel cannot be viewed on a channel view operation.

- **Numeric Key(0-9)** : You can change channel by inputting channel number directly.
- **Up/Down** : Moves to the previous/next channel.
- **Left/Right** : Adjusts volume.
- **LANG** : Shows the list of the audio language available in the current channel. (The selected audio language information is saved and applied when you watch the channel.)
- **FAV** : The Favorite List is displayed.
- **MENU** : You can enter the Main Menu.
- **OK** : You can select an item in the SAT, SUBTITLE or LANG list. Program list is displayed according to TV/Radio Mode.
- **EXIT** : The button makes a banner or other lists including SAT, SUBTITLE and LANG disappeared.
- **EPG** : The EPG menu of the current TP is displayed.
- **TEXT** : Shows the list of subtitle languages the current channel supports.
- **PAUSE** : Pause the video/audio output of receiver, To clear pause press PAUSE button again.
- **INFO** : Press the INFO button once to display short and extended information. If you press the button again before the banner disappears, a new banner will be displayed showing the details of the current channel.
- **RECALL** : Shows previous channel.



**Tips**  
TV/Radio/Favorite Lists classified into the Simple mode and the Edit mode. If you press TV/Radio/Fav at Normal, the Simple mode menu is displayed. The simple mode provides fast channel move and fast display of basic information, but does not provide the Edit function. If you want to edit, select Channels Manager and Favorites Manager of Main Menu at Normal status.  
The TV/Radio/Favorite menu displayed in this section is the Simple mode. To use edit function, see 4.5 Channel Manager and 4.7 Favorites Manager.

**4.5 Channel Manager(Edit Mode)**

You can change channel information in the "Channel Manager" of Main Menu. Use TV/Radio button to view TV/Radio channel list. Use SAT button to view other satellite's channel list.



<screen 17>

**Sort**

You can sort channel orders of channel list. Use the 'Sort' button.



<screen 18>

**Name** : Sort channel order by channel name. Use the 'Name' button.  
**Type** : Sort channel order by channel status. Free and Scrambled.  
**Tip** : Sort channel orders by transponder order.  
**Manual** : You can move a channel position.  
First use the 'Manual' button. Then the color of the selected channel name will be changed. Use the cursor move buttons to move to the position that you want. Use the 'Manual' button again.